

KOREA BUYERS GUIDE

G e n e r a l I t e m s

www.buykorea21.com
<http://korean-products.com>

Next-Gen Korean Products Supporting Life without Limits

Reha·Homecare 2025



05

May 2025
(Issue 611)

China Gifts Home Expo 2025

NEO ZZANG

is a Korean unisex fashion brand specializing in self-manufactured casual wear.

Focused on high-quality in-house production, the brand offers a variety of items such as hoodies, sweatshirts, training pants, and T-shirts for both men and women.

Most products are developed through NEOZZANG's own planning and manufacturing process, ensuring consistent quality, original design, and great value. Ideal for couples, families, and group styling, the brand combines comfortable materials like fleece and terry with minimalist design to deliver practical, stylish everyday fashion.





**2-second attachment
one-touch tempered glass
(privacy protection)**



**iPhone, Galaxy Fold Privacy
Protection Film**



**3 in 1 MagSafe
Charger Stand**



**Docking Auxiliary
Battery**



**100W Charging
Cable C to C (Black)**



**Charger Adapter
33W**



**MagSafe GripTok
(Character)01**



**MagSafe Leather
Card Wallet**



**MagSafe Car Mount
(Black)**



**MagSafe Car Mount
Wireless Charging (Black)**



**High Definition Full Cover
Tablet Screen Protector Film**



**Paper Texture Tablet
Screen Protector Film**



NEOZZANG

NEO ZZANG

is a Korean unisex fashion brand specializing in self-manufactured casual wear.

Focused on high-quality in-house production, the brand offers a variety of items such as hoodies, sweatshirts, training pants, and T-shirts for both men and women.

Most products are developed through NEOZZANG's own planning and manufacturing process, ensuring consistent quality, original design, and great value. Ideal for couples, families, and group styling, the brand combines comfortable materials like fleece and terry with minimalist design to deliver practical, stylish everyday fashion.

KWANGSAN INV. No. D1051

Head Office : 20-24 Gagok-ri, Hwado-eup, Namyangju-si,
Gyeonggi-do, Republic of Korea
T. +82-70-8829-2427

Factory : 2nd floor, Gyeongwon, 390 Myeonmok-ro,
Jungnang-gu, Seoul, Republic of Korea
T. +82-70-8829-2427 **E.** bosodad@nate.com

<https://smartstore.naver.com/neozzang>



NEOZZANG



akvan hood
black front



akvan hood
navy front



choise pants
black



akvan hood
black back



akvan hood
navy back



choise pants
blue



choice t-shirts
blue front



choice t-shirts
blue back



choice t-shirts
light green front



choice t-shirts
light green back



**colorful
short pants black**



**colorful
short pants gray**



**half henley
neck t-shirts black**



**half henley
neck t-shirts white**



**pigment setup
beige**



**pigment setup
charcoal**



**pigment setup
khaki**



**diagonal
line black**



**diagonal
line charcoal**



**diagonal
line navy**



**escape
pants black**



**escape
pants gray**



NEOZZANG



side line pants black



side line pants blue



side line pants gray



waiting man short pants black



waiting man short pants gray



waitingman pants black



waitingman pants gray



white line pants white



VITA ON Vitamin Shower Filter



A company that provides nature, health, and precious skin.

For healthy and beautiful skin, SKINMANSION produces safe systems and distribution processes so that you can be reborn with healthy skin based on honest ingredients and good ingredients

VITA ON, which was created by reflecting various needs, is recognized by the United States, Russia, China, Singapore, Thailand, Vietnam and Indonesia, and is growing every year. Based on SKINMANSION's corporate philosophy, We will try to grow into a trusted company.



SKINMANSION CO., LTD.

T. +82-70-7456-1700 **E.** skinmansion@naver.com / link.angelco@gmail.com

VITA ON Vitamin Shower Filter

It purifies tap water more cleanly and also makes your skin beautiful with milk ingredients and vitamin C.
A shower filter for showers where vitamin C protects the skin while using the shower at home,
moisturizes the skin with chlorine removal function



Vita On Vitamin Shower Filter
Jasmine Scent

VITA ON Vitamin Shower Filter

Remove residual chlorine from tap water, remove foreign substances, moisturize skin
Reduces skin irritation by removing residual chlorine from tap water,
and blending oil provides moisture to tired and dry skin.



Vita On Vitamin Shower Filter
Sage Scent



SKINMANSION CO., LTD.

T. +82-70-7456-1700 E. skinmansion@naver.com / link.angelco@gmail.com

It's Time for a Small Change for Our Family Health.

Safe products tested by Korea's official certification authorities Eliminate more than 98% of micro-toxins, foreign substances and residual chlorine.
It purifies the water and dissolves vitamin C to improve the skin.



Baby Powder



Blossom



Lavender

A healthy idea of water





Dragonfly[®]
TAILORING SCISSORS

Introducing the **Dragonfly**[®] professional tailoring scissors



The **Dragonfly**[®] tailoring scissors are manufactured through special heat treatments on high class steel. When cutting cloth, the cloth will not shrink and a clean, precise cut will result. Furthermore, the molded handles of the scissors reduce exhaustion and provide the user a comfortable grip for better working efficiency.

Model No.	Size(±3)	Wgt(kgs)
A-300	305 ^m / _m	0,461
A-280	284 ^m / _m	0,323
A-260	264 ^m / _m	0,270
A-240	250 ^m / _m	0,237
A-220	234 ^m / _m	0,205



HEGA INV No. C209

HEGA Corporation

Head Office & Factory, Korea

(82+41)956-8888 (82+41)956-8700-Fax

<http://www.hegacorp.com>

U.S. Branch

(1+909)673-1791 (1+909)673-1891-Fax

E-mail: hegausa@gmail.com

China Branch

(86+21)6219-0185 (86+21)6219-0157-Fax

E-mail: aichan@hegacorp.com

Vietnam Branch

(84+28)3620-6178

E-mail: aichan@hegacorp.com

Contents

May 2025 (Vol.53 No.5)



Senior Care Products / Page 38

14

New & Hot



Medical Devices / Page 39

18

Cover Story :

China Gifts Home Expo 2025

26

Special Report :

Reha-Homecare 2025



Healthcare Product / Page 41

54

Pioneer

56

Tourist Attractions



Health Food Products / Page 44

59

Advertisers' Index

Electronics and Machinery & Automotives Published!

In addition to Korea Buyers Guide, we also published another trade magazine, Electronics and Machinery & Automotives in May.



Electronics

Cover Story
Company to Watch
Trade News
Tourist Attractions
Advertisers' Index



Machinery & Automotives

Cover Story
Special Report
Trade News
Exhibition Preview
Tourist Attractions
Advertisers' Index



CHAIRMAN Kim Jae-hyun

PRESIDENT & PUBLISHER Sim Hong-sub

EDITORIAL MANAGER Kim Min-su

EDITORIAL ADVISER Peter Webster

REPORTERS
Kwon Su-on
Lee Seung-hwan

DESIGNERS
Yun Gi-sung
Lee Moo-young
Song Hye-su

CIRCULATION Cho Hye-young
Shim Jae-young

MANAGING DIRECTOR Oh Young-chun

BUSINESS ADVISER Park Byung-il

ADVERTISING Kim Chung

Korea Buyers Guide (ISSN 1227-5328)

Published on May 1, 2025

by Maekyung Buyers Guide Corp.
Fl. 2-3, 622, Bongeunsa-ro,
Gangnam-gu, Seoul 135-090, Korea
Tel: (82-2)558-5608
Fax: (82-2)558-4915

<http://korean-products.com>
<http://korean-electronics.com>
<http://korean-machinery.com>
<http://www.buykorea21.com>
<http://www.buyersguide.co.kr>

E-mail: info@bg21.co.kr

Under the pertinent registration No. Gangnam, BA00035
Under the pertinent registration No. Gangnam, BA00036
on Nov. 6, 1973.

Printed by Han River Printing
Tel: (82-2)498-7800 Fax: (82-2)498-7807

Advertising
Tel: (82-2)558-3491/4 Fax: (82-2)558-4915
Subscription & Circulation
Tel: (82-2)558-5102 Fax: (82-2)558-5003

Subscription Rate by Air Mail
One Year: US\$95: East Asia
 US\$110: Elsewhere
Two Years: US\$145: East Asia
 US\$170: Elsewhere

Local Price for 1 Copy: KRW 8,000

Copyright©2003 by **Maekyung Buyers Guide Corp.**
All rights reserved.

Overseas Sales/Distribution Agents

■ **Australia:** World Federation of Korean Traders Association/Kim Sung Hak
112, Miller Street, West Melbourne Vic 3003
Tel: 61-3-9328-1551 Fax: 61-3-9328-3751
E-mail: kimbo@basecamp.com.au

■ **Australia:** KAUSSIE /Sang-Tae Lee
27 Bradley Rd. South Windsor NSW 2756
Australia
Mobile: 0490-111-994
Phone: (02) 4505 1688
internet phone: 070-8823-3902
E-mail: director@kaussie.net

■ **Bangladesh:** Medilife Solutions Ltd./
Monayem Siddique
House-9(7th floor), Road-113/a, Gulshan-2,
Dhaka-1212 Bangladesh
Tel: 880-1711-080070
E-mail: monayem.siddique@gmail.com
monayem@medilifesolutions.com
www.medilifesolutions.com

■ **Brazil:** HSK/Han Su Kim
Rua Hermann Huscher, 2765 Blumenau SC
Brazil
Mobile: 55-47-98835-1263
Phone: 55-47-3488-5440
Email: kim@hskmaquinas.com.br

■ **Cambodia:** JS Cam Corporation
#S-18 St. Silver, Sangkat Tomnop Teuk, Khan Chamkarmon, Phnom Penh, Cambodia
Tel : +855-23-632-8881 / +855-70-660188
E-mail : jsgkorea94@naver.com
www.helloasean.com

■ **Canada:** Kal Hussain Kalair
16 JILL CRES BRAMPTON, ON Canada, L6S 3J2
Mobile:+1(647)3007491
E-mail: kalair@gmail.com

■ **Chile:** Luxones SPA / MrEliseo Letras
Antonia Lopez de Bello 464, Recoleta, Santiago
Tel: +56978484181
E-mail: eliseoadello@gmail.com

■ **Germany:** Architektur Stadtebau
Landschaftsarchitektur/Kejoo Park
Baustrasse 17 60322 Frankfurt am Main
Tel: 49-69-525233
Fax: 49-69-525539
E-mail: kejoo@kejoopark.com

■ **Ghana:** Pelfaco Limited/Mr. Fagus Yaw Berko
No. 7, Noi Fetreke Street, Airport Res. Area,
Accra P. O Box CT 4055, Accra, Ghana
Tel: 233-244266668 Fax: 233-21223177
E-mail: pelfacogh@yahoo.com

■ **Hong Kong:** Roger Si / Beryl (HK) Limited
23/F, 145 Hennessy Road
Wanchai, Hong Kong
Tel: 852-8101-7839
E-mail: beryllcorp@yahoo.com

■ **INDIA:** Nilimad Technologies / Shikhar Kumar
SSB Road, Bettiah Raj Colony, Narainapur
village, Post Naraipur, Bagaha 2, West
Champaran, Bihar, India
Tel: +918349989483
E-mail: info@nilimad.com

■ **Malaysia:** PDS Global SDN BHD/B.C.
A8-2, Jalan Selaman 1/1, Dataran Palma, 68000
Ampang, Selangor, Malaysia
Tel: +603-4270-5430/6430
Mobile: +6012-320-9430
Internet Phone : 070 8690 9430
E-mail: harry@pdsconsulting.com.my
bchong88@hanmail.net

■ **Myanmar:** JS Global Myanmar Co.,Ltd.
Building No.194, 8 Ward, Room No (101),
Thukha Condo, Thukha Street, Hlaing Township,
Yangon, Myanmar
Tel : +95-9778859562 / +95-9450045918
E-mail : jsglobalcorp@naver.com

■ **Nigeria:** Olayiwola Olalekan Ajadi,
CEO/ Managing director.
Adisa olayiwola and Sons Nigeria LTD.,
2, adisa Olayiwola avenue off Alhaji baruwa
street, woleola estate, osogbo osun state, Nigeria
Mobile: +2348126927744 / +2348136813544
E-mail: mogunre@gmail.com

■ **Pakistan:** Spectra Archi & Builder/Sajid Khurshed
Office 01, Daryal Plaza opposite Punjab Bank,
Main muree expressway, Barakahu Islamabad,
Pakistan
Mobile: 92-3000125000
E-mail: sajidkhurshed13@gmail.com

■ **Singapore :** 21 Woodlands close #04-09,
Primz Buzhub , Singapore 737854
Tel:65-64-921-721
H.P:65-8488-0339
IP Phone:070-8867-6375
E-mail:skbeck@empas.com

■ **Thailand:** Perfect Commercial Ltd./
Montri Mettarom
Part(Branch1) 36/2, Soilertmongkol,
Liaptaang-duand., Tungkru Sub-district,
Tungkru District, Bangkok 10140, Thailand.
Tel:66-2-4905955/66-2-4905956/081- 914 4803
Fax:66-2-4905957
E-mail: montrime@truemail.co.th

■ **U.A.E:** Fuji Office Machines (F.Z.E)/ Amir Ali
Villa 24 Street 24A Community 126,Opp New Al
hamriya Pharmacy Abu Hail Dubai,UAE
Mob: 971-50-7880076
E-mail: totalofficeproducts@gmail.com
<https://www.linkedin.com/in/amir-ali>

■ **Uganda:** ARA Electronics & Machinery
Ltd./JangJu Jo
P.O.Box 23099, Plot 1, Sure House, 1st
Floor, L1.11, Bombo Road, Kampala, Uganda
Tel: 256-41-4230994
Fax: 256-41-4230991
E-mail: ugandajiji@gmail.com

■ **U.S.A:** IC International/Hyowan Kim
100 Duxbury Way Folsom, CA 95630 USA
Tel: 1-916-220-5438
Fax: 1-916-361-3308
E-mail: ick1006@yahoo.com

■ **U.S.A:** WAF International Inc/Chang Hwang
1440 S Carlos Ave Ontario, CA 91761 USA
Tel: +1-909-923-4127
Mobile: +1-951-847-1332
E-mail: support@wafinternatioal.com

■ **UZBEKISTAN:** Sarvinoz Karimova
Jangoh dahasi 2 Shaykhanta Tashkent
Uzbekistan
Tel: +998970276204
E-mail: sarvinozkarimovapknu@gmail.com

■ **Vietnam:** Viet Tin JS Company/Dang Tuan Lan
114/17 Street No 18 Binh Hung Hoa Ward Binh
Tan Dist HCMC Vietnam
Tel: 84-91-417-4178
E-mail: ponydang@gmail.com

We put our 'sincerity' into Tookup

High purity 100% horse oil containing ingredients closest to the human skin

Tookup Horse Oil is a natural cosmetic product made only in Jeju, a UNESCO World Heritage Site.

On this island, horse oil has been used since ancient times to treat burns and acne, and is known as a natural skin solution due to its excellent efficacy.

Horse oil is composed of ingredients most similar to the human skin barrier, and contains a large amount of unsaturated fatty acids and vitamins that help regenerate the skin, along with anti-inflammatory and antibacterial effects.

Tookup Horse Oil, a zero-waste cosmetic that contains no chemical ingredients such as surfactants or preservatives, is widely used as a cream for atopic skin problems and stretch marks for pregnant women.

This product is becoming more popular overseas, as it is recognized as containing the original horse oil and natural plant ingredients from Jeju.



WWW.HALALKOREA.CENTER

Korea Halal Trade & Economic Expo
코리아 할랄 무역 및 경제 엑스포

Booth Application



K-HALAL FESTA

COEX Magok, Seoul

Aug. 29 (Fri.) - 31 (Sun.) 2025



Organised by :



OK-NETWORKS
해외한인경제인협동조합

Partners:



Buyers Guide



글로벌 안양성문 비즈센터
Global Anyang Sunmoon Biz Center

Since 1987
KIOCO
KOREA INT'L EXHIBITION CO., LTD



حلال
HALAL



할랄 코리아 주식회사
HALAL KOREA CO., LTD



www.halalkorea.center

KOREA HALAL TRADE &
ECONOMIC EXPO
2025



COEX MAGOK
SEOUL
AUGUST 29 - 31

GROW YOUR BUSINESS WITH US



Focus Sectors

- Food & Beverage Industry
- Fashion Brands
- Manufacturing & Distribution
- Hospitality & Service Industry
- Tourism & Travel Agencies
- Research, Science & Technology
- Islamic Art & Design

Join Us



+82-010-7785-8474
+65-8608-1505 / +82-010-7785-8474
+60-12-650-6460



info@roszmary.com
halalkim@gmail.com
husainismail767@gmail.com



Buyers Guide



Islamic Fashion



South Korea Green



Ceramic Products

Tableware

[INQ. NO. 2505C01] VIVA series, which succeeds the representative Blanc series, draws inspiration from ancient Roman architecture with a modern reinterpretation. The name "VIVA," meaning "hurrah" in Italian, represents the design point emphasizing proportional beauty inspired by Western aesthetics.

Made of stoneware, a highly preferred material by customers, the VIVA collection includes bowls, mugs, centerpieces, plates, sauce bowls, pasta bowls, and other individual pieces, also available as a 4-person home set. The series combines modern functionality with classic design elements, making it suitable for both casual dining and special occasions.



Dining Accessories



Sumaksae Spoon Rest 3P Set captures the formal beauty of Silla Dynasty's iconic roof-end tiles in everyday life. The set features three distinct designs: a human face pattern, lotus motif, and honeysuckle motif. Each piece provides ample space for placing utensils, combining practicality with the aesthetic beauty of Silla's cultural heritage.

The set complements the Smile of Silla Sauce Bowl perfectly, creating a cohesive dining experience that reflects Korea's rich cultural heritage. These carefully crafted pieces transform ordinary dining accessories into artistic expressions of historical significance.

Drinkware

Grape and Child Pattern Petal Handle Cup 2P Set is a limited-edition item commemorating the National Museum of Korea's special exhibition "Shaping a Blue World: Goryeo Celadon." The design creatively reinterprets grape vines, grape clusters, and childlike face patterns from the original celadon. The addition of petal-shaped handles complements these motifs, creating a harmonious blend of traditional and contemporary aesthetics.

The delicate celadon color and intricate patterns make each cup a unique piece of functional art, perfect for serving traditional Korean teas or modern beverages while celebrating the legacy of Goryeo Dynasty craftsmanship.

The Life of SSUEIM was established in 2009 and is committed to creating products that align with the latest trends. By focusing on ceramic and nature-friendly materials, the company aims to become a total living brand.

The company offers a wide range of home living items, from tableware to bedding, that enhance the quality of everyday life.



• The Life of SSUEIM

C-201, 168, Gasan digital 1-ro, Geumcheon-gu, Seoul, Republic of Korea

Tel: (82-10)8881-0774

E-mail: samlee@ssueim.com

Website: www.ssueim.com

Environmentally friendly Company

OKDUFOOD

Okdu Food has been involved in service area industry since 1992 and Okdu Food is also operating food manufacturing business and distribution business. Okdu Food has been constantly developing under the management philosophy of "Trust and Passion." We are confident that we are the competent partner for our abilities certified by relationship with various partner companies.

SINSIN Pharm.

SinSin Pharm. Company, as you may know well, has been specialized in manufacture and development of external anti-inflammatory & analgesic drugs such as pain relief patches involving "Sinsin Pas" which has become a common name of external anti-inflammatory & analgesic in Korea, hydro gel patches, Liniments, Cream, wound care bands, ointments, Spray drugs, etc. since establishment in 1959.

SINSIN PAS PAIN RELIEF PATCH



Head Office : Korea Bio Park B/D C-4fl. 700, Daewangpangyo-ro, Bundang-gu, Seongnam-si, Gyeonggi-do, Republic of Korea
T. +82-31-776-1141~4

Factory : 90, Beomjigi-ro, 141beon-gil, Danwon-gu, Ansan-si, Gyeonggi-do, Republic of Korea
T. +82-31-491-6151 E. wjhan@sinsin.com

www.sinsin.com

INQ No. D1050



Future-Leading Technology Development



Samyang Fine Chemical will continue to pioneer new business areas through continuous research & development and lead the development of cutting-edge technologies that can meet all the requirements of domestic and foreign customers.

Go to the World & Space!



**SAMYANG
FINE CHEMICAL**

Head Office 125, Hoehyeon 1-gil, Yangsan-si, Gyeongsangnam-do, Republic of Korea

T. +82-55-370-6881 **F.** +82-55-370-6889 **E.** syfc@syfc.co.kr

Seoul Office 16, Banpo-daero 27-gil, Seocho-gu, Seoul, Republic of Korea

T. +82-2-3488-5472 **F.** +82-2-521-3107 **www.syfc.co.kr** INQ.No. N627

Major Gift and Home Product Trade Shows Coming to China in 2025

China will host two major industry events for gifts and home products in 2025, each serving different regional markets and attracting thousands of exhibitors and visitors.

The Beijing Gift & Home Exhibition, also known as the 43rd China Beijing International Gifts, Premium & Houseware Exhibition, will run from August 14-16, 2025, at the China International Exhibition Center. With a 20-year history, this event is a flagship trade show in North China, connecting northern and southern markets while serving as a bridge for buyers from surrounding regions including Tianjin, Hebei, and Northeast China.

The Beijing event attracts nearly 1,200 exhibitors and over 48,000 visitors annually, representing traditional retailers, online distributors, and procurement companies. Exhibition halls are organized by categories including wholesale distribution, food, welfare promotion, e-commerce, crafts, original design, stationery, and houseware.

Additional services include a Diamond Customers program for premium buyers, regional meetings to facilitate networking, and an exclusive app with online matchmaking for pre-event connections.

The larger China (Shenzhen) International Gifts and Home Products Fair will take place from October 20-23, 2025, at the Shenzhen World Exhibition & Convention Center. Described as the largest trade show of its kind in Mainland China, this biannual event is organized by RX Huabo and serves as a critical platform for southern China and international markets.

Based on previous editions, the Shenzhen fair hosts over 2,000 exhibitors across 5,000 booths and attracts more than 150,000 visitors from 67 countries during its four-day run. The exhibition spans 110,000 square meters and primarily features manufacturers offering quality products to distributors, agents, and corporate end users.

An interesting highlight is the co-location with the 3rd Shenzhen International Vape Expo, which will feature events like new product releases and vaping competitions.

For industry professionals seeking opportunities in the gifts and home products sector in China, these two major events offer distinct advantages: Beijing provides access to northern markets, while Shenzhen delivers a more international experience during peak buying seasons.



Hygiene Products

Body Cleanser

[INQ. NO. 2505C02] Moisterr Pink Flower Perfume Body Cleanser is a luxurious body care product that brings the essence of spring into your daily routine. Infused with the enchanting scents of plum blossoms and Chionanthus retusus flowers, this cleanser not only purifies the skin but also offers a delightful sensory experience.

It is formulated with natural, plant-based ingredients, including mineral-rich seaweed petals, which help exfoliate dead skin cells and eliminate unwanted body odors. The body cleanser produces a rich, creamy lather that gently cleanses tired and rough skin, leaving it refreshed and revitalized.

Its mildly acidic formula ensures a gentle yet effective clean, maintaining the skin's natural moisture balance. After showering, the lingering floral fragrance and long-lasting hydration create a soothing and comforting experience, making it an ideal choice for anyone seeking a moment of relaxation.



Body Lotion

Moisterr Pink Flower Perfume Body Lotion offers a harmonious blend of fragrance and skincare benefits, encapsulating the warmth and allure of spring blossoms. This body lotion features the patented Kaol Oil, which forms a protective barrier on the skin, enhancing its elasticity and radiance.

The lotion's soft, milky texture absorbs quickly without leaving a sticky residue, delivering a light yet enduring hydration and nourishment to the skin. Designed to repair and rejuvenate, it helps

restore a smooth and luminous body appearance, making it a perfect addition to any body care regimen.

Established in December 2019, Uartkorea Co., Ltd. is a leading cosmetic manufacturer renowned for its innovative use of natural ingredients. Their products undergo rigorous skin irritation testing, ensuring they are safe and gentle for all skin types.



• Uartkorea Co., Ltd.

#3414, 288, Junam-ro, Yangsan-si, Gyeongsangnam-do, Republic of Korea

Tel: (82-55)386-4823

E-mail: uartk4823@naver.com

Website: uartkorea.co.kr

Household Goods

Lens Cleaner

[INQ. NO. 2505C03] CMA Global's Lens Cleaning Products are designed to deliver premium cleaning performance while maintaining safety for all lens types. These products are antibacterial, eliminating 99.9% of germs, and include antistatic properties to prevent dust accumulation.

Infused with alcohol for enhanced cleaning power, they effectively remove dust, smudges, and fingerprints without leaving streaks. Tested by COLTS Laboratories and certified by the REACH Test, these products ensure top-tier cleaning results.

CMA's lens cleaners are formulated with ultrapure reverse osmosis water, providing a streak-free finish. They are versatile enough to be used on a wide range of surfaces, including eyeglasses, sunglasses, smartphones, tablets, camera lenses, mirrors, and even car dashboards.

Available in wipes, sprays, and dropper formats, these cleaning products offer convenience for daily use. CMA Global takes pride in producing its lens cleaning solutions using an in-house purification system, ensuring the highest level of cleanliness

with purified water that is free from impurities and bacteria.

The company's commitment to quality and innovation is reflected in every product, catering to both professional and everyday needs. CMA Global Co., Ltd. is a leading eco-friendly manufacturer specializing in microfiber products and lens cleaning solutions.

With over 200 premium microfiber items exported to 100 countries worldwide, the company manages the entire production process from knitting to final production. CMA Global continues to innovate through in-house research and development, ensuring high-quality, sustainable products that contribute to a cleaner, healthier world.



- **CMA Global Co., Ltd.**
29 Palgong-ro 47-gil, Dong-gu, Daegu, Republic of Korea
Tel: (82-53)588-6070
E-mail: cmaglobal@cmaglobal.net
Website: cmaglobal.net

Household Goods

Filter Showerhead

[INQ. NO. 2505C04] KLAR-LIST Filter Showerhead offers a superior shower experience with five key functions: removing rust and impurities from tap water, saving water, delivering anion-rich water, providing a soft water stream, and amplifying water pressure.

This showerhead uses advanced filtration technology, similar to that of a water purifier, ensuring users have access to cleaner water. Unlike traditional filter showerheads that require both the handle and head to house filters, the KLAR-LIST compresses the filtration system into a single unit, efficiently removing chlorine, impurities, and odors for a refreshing shower.



Mist Showerhead



Mist Showerhead produces ultra-fine water droplets smaller than skin pores, allowing for a gentle and soothing shower experience, especially beneficial for those with sensitive skin.

This showerhead, with its cutting-edge design and functionality, has been embraced in over 40 countries, including the U.S., China, Japan, and across Europe. OEM/ODM services are available to cater to the specific preferences of different international markets.

KNTeC was established in 1999 with a focus on eco-friendly solutions for clean water and water conservation. Specializing in water-saving and high-pressure-enhancing showerheads, the company pioneered the development of the world's first aroma vitamin filter technology.

KNTeC's innovative products, including showerheads and water-saving components, are designed to protect the environment while providing customers with healthier, more enjoyable water experiences.

- **KNTeC**

41-1 Techno 11-ro, Yuseong-gu, Daejeon, Republic of Korea

Tel: (82-42)633-4851

E-mail: knitech@aromasense.co.kr Website: www.aromasense.co.kr/eng

Hygiene Products

Natural Solid Shampoo Bar

[INQ. NO. 2505C05] Natural Fermented Ripen MODAM Solid Shampoo Bar is made from 100% natural ingredients with no artificial chemicals added. The shampoo bar contains 20 kinds of herbal ingredients that prevent hair loss, such as Eoseongcho, green tea, fennel, pine needles, mint, persimmon leaves, black ginseng, black garlic, rosemary, and moringa.

It also contains *Artemisia Sieversiana* Wild which has good anti-inflammatory and antioxidant effects enough to cure bedsores. The self-developed fermentation maturing technology removes harmful ingredients from the natural materials and maximizes the rate of nutrient absorption.

Try shampooing with MODAM Shampoo Bar for reduction of scalp inflammation; thickening of hair; reduction of hair loss upon continuous use; improvement of various scalp problems, such as the dry scalp, itchiness by dandruff, and so forth.



It is a product that had been verified by authoritative certification institutions such as KTR, KCL, and the Korea Dermatology Research Institute. This product received the "World-class Product of Korea" award, and a study on the effects of *Artemisia Sieversiana* extract on hair loss prevention and cell regeneration was published in the 2022 edition of the Journal of the Korean Medical Association.

Currently, it enjoys consistent popularity as a top-selling product on QVC home shopping in Japan. MODAM Global Nature Co., Ltd. has launched the Volumizing Tubing Mascara as part of its new makeup line.

This mascara, which promises to enhance lash volume without smudging or clumping, made its debut on Japan's QVC home shopping channel in August 2024. The product was met with enthusiasm, leading to a second broadcast scheduled for October and a third one in the works.

The company is also working on expanding the mascara's availability through major online retailers like Amazon in the U.S., signaling its ambition to capture a wider market share in the beauty industry. In addition to makeup, MODAM Global Nature Co., Ltd. has introduced a new skincare line featuring the Collagen Moisture Balance Therapy Toner, Essence in Emulsion, and Cream.

These products, formulated to maintain the skin's moisture balance and support elasticity, generated significant interest from buyers at international exhibitions even before their official release. With positive reception, the company is now poised to finalize contracts with overseas buyers, ensuring a strong market entry.



• **MODAM Global Nature Co., Ltd.**

23-13, Samseong-ro 76-gil, Gangnam-gu, Seoul, Republic of Korea

Tel: (82-2)3453-7133

Fax: (82-2)3453-0498

E-mail: modam@modamkorea.com

Website: www.modamkorea.com

Water-Purification Products

Water Filter

[INQ. NO. 2505C06] The HF Series is a high-flow water purification solution ideal for hotels, restaurants, and cafes. This series includes three types of filters: sediment, carbon, and scale inhibitor. Each filter can be used individually or as part of a 2 or 3-stage system, depending on the specific requirements and water quality.

The Sediment Filter serves as a pre-filter in multi-stage systems, with a 5-micron pore size that effectively removes various particles. It protects more delicate filters with smaller pore sizes, significantly extending their lifespan.



The Carbon Filter, made from carbon block, efficiently adsorbs and reduces residual disinfectants, chlorine, microplastics, heavy metals, and other organic chemicals. It is certified with NSF 42, 53, and 401 standards. The Scale Inhibitor prevents scale formation that can clog machines, particularly expensive espresso machines, thereby reducing maintenance costs.

It is also NSF 42, 53, and 401 certified. The FX Series provides an all-in-one filtration system equipped with a 4-step premium solution consisting of Felt, Carbon Block, UF Membrane, and optional Polyphosphate.

Designed for situations where space is limited but high-quality filtration is required, the FX Series filters down to a 0.1-micron pore size, effectively reducing bacteria. This series is also NSF 42, 53, and 401

certified, ensuring top-tier filtration performance.

The IEN Series features filters with ion exchange resin that effectively remove scale-causing minerals. These filters induce minimal pH reduction due to their composition of cation exchange resin mixed with sodium and hydrogen.

The IEN Series is the ultimate solution for protecting expensive espresso machines from scale, ensuring longevity and optimal performance. Microfilter Co., Ltd. is a world-class filtration specialist dedicated to creating value for customers and the environment.

With over 20 years of expertise, Microfilter has established a global network across more than 40 countries. The company annually sells over 15 million filters worldwide, maintaining a unique position in the global water filtration market with innovative manufacturing technologies for filter systems and carbon blocks.

- **Microfilter Co., Ltd.**

15-1, Gwinong 3-gil, Deoksan-eup, Jincheon-gun, Chungcheongbuk-do, Republic of Korea

Tel: (82-43) 536-5221

E-mail: euijoon.kim@chunggho.com

Website: <https://fluux.co.kr/>



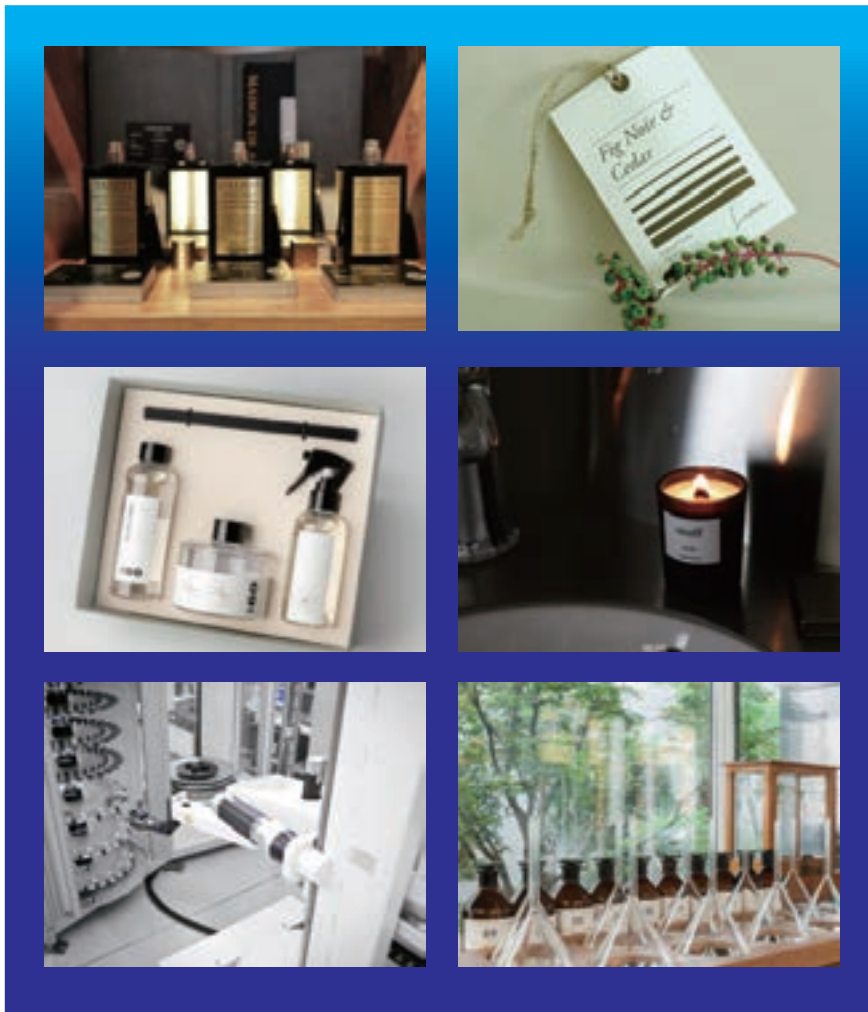
ventus ac aqua™ R&D LAB.BY



K-perfume / K-Diffuser factory

Fragrance product OEM ODM manufacturing factory
(liquid type and solid type)

We manufacture the largest variety of fragrance products in Korea (about 14 types, with a portfolio of over 800 products) and are currently exporting to the United States, Japan, Taiwan, Russia, and the Netherlands.



ventusacqua

Room A401 in B-dong, 540 Misadae-ro, 2nd Hyundai Knowledge Industry Center, Hanam-si, Gyeonggi-do, Republic of Korea

Tel. +82-10-3730-3760 E-mail. info@ventusacqua.com www.ventusacqua.com

[INQ No. D1021]

ROSEI

Re-Design Roses

PERFUME INDUSTRY

Today's fragrance market is increasingly polarized between low-cost options and high-end offerings, leading many consumers – especially within the MZ generation – to seek more thoughtful, balanced choices.

While Korean fragrances often lack distinctiveness and many Western fragrances can feel overpowering, ROSEI addresses this gap.

We focus on creating scents that harmonize the preferences of both Eastern and Western consumers – offering fragrances that are refined yet expressive. By prioritizing both the essence of scent and the integrity of brand identity, ROSEI delivers an experience that is emotionally resonant, culturally balanced, and uniquely positioned for the evolving Asian and global markets.

WHY ROSEI

ROSEI is a brand created by two brothers – one a licensed pharmacist in the U.S., the other a business graduate from Boston University – who grew up as the children of flower designers with over 30 years of experience.

Rooted in this lifelong connection to flowers and shaped by international perspectives, we set out to reinterpret the timeless art of floristry for the modern world.

We chose the rose – the most iconic and universal flower – as the symbol of our journey, seeking to reimagine memories, emotions, and experiences through its enduring beauty.

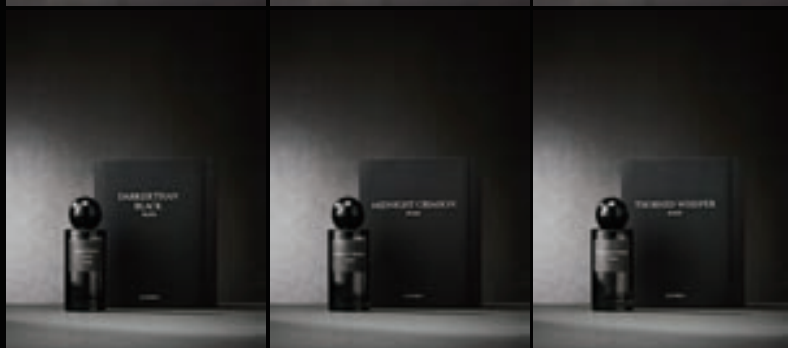


CURRENT PERFUME LINES

At ROSEI, each fragrance captures a different face of the rose – not just its beauty, but its thorns as well.

SUGAR CUBE, YOUR BOUQUET, and HONEY HAZE embody the rose's timeless association with cherished memories and tender moments.

In contrast, MIDNIGHT CRIMSON, THORNED WHISPER, and DARKER THAN BLACK reveal the deeper, more complex side of the rose – its thorns, its mystery, and the raw emotions it can evoke.



ROSEI Co., LTD



14 ,Baekbeom-ro 1-gil, Mapo-gu, Seoul, Republic of Korea 04102

E-mail: kevin@rosei.info

Website: www.rosei.kr

Tel: (82-70)8057-6432

Reha Homecare 2025: A Glimpse into the Future of Wellness and Independence

Where Innovation Meets Care

As South Korea faces the rapid advancement of its aging society, Reha Homecare 2025 emerges as a critical platform showcasing the latest in homecare, rehabilitation, and welfare. Set to take place from May 29 to 31, 2025, at COEX Hall B in Seoul, this three-day exhibition brings together industry professionals, technology innovators, and the general public to explore solutions that support dignified, independent living for the elderly and disabled.

Organized by the Korea Bio Cluster Federation and WeExpo, with support from several government agencies, the event is backed by both institutional credibility and public trust. It will run in parallel with a Biohealthcare Special Exhibition, highlighting the increasingly interconnected nature of medical, wellness, and digital healthcare sectors.



Expanding Access and Empowering Lives

Reha Homecare 2025 offers an expansive view of the industry's future, featuring a broad range of products—from assistive devices and smart home medical equipment to mobility aids and functional wellness items. The exhibition promises hands-on experiences that allow attendees to directly engage with cutting-edge rehabilitation technologies, including AI-based care robots and connected health devices.

More than just a trade show, the event serves as a comprehensive platform for learning and networking. Visitors can attend seminars on AI in rehabilitation engineering, the future of medical foods, and strategies for revitalizing senior-friendly industries. Highlights from the previous year included live product demonstrations, industry forums, and interactive booths hosted by public health agencies like the National Health Insurance Service.

Admission is free, and both on-site and pre-registration options are available, making the event accessible to professionals and the public alike. With 2024's edition drawing participation from 185 companies and generating substantial media attention, Reha Homecare 2025 is expected to further solidify its position as a pivotal event in the wellness and care technology ecosystem.

In a time when maintaining health and independence at home is more vital than ever, Reha Homecare 2025 offers a timely and inspiring look at how technology and compassion can come together to enhance the quality of life.



• Reha-Homecare 2025 Secretariat

Tel. +82-2-881-5151 E-mail. intl@weexpo.kr Website. www.rehahomecare.com

Health Care System

Decubitus Ulcer Prevention Mattress Operating System

[INQ. NO. 2505C07] SmartHealthCare System is an innovative healthcare solution designed to improve the health and safety of elderly individuals. This comprehensive system utilizes advanced AI and IoT technologies to offer various functions that significantly enhance the quality of life for users requiring extended care.

The operating system features automatic position change alerts that help prevent pressure ulcers, which commonly occur when pressure concentrates on specific body areas due to prolonged positioning. The system guides users to change their position periodically, reducing the risk of developing these painful conditions.

One of the standout features is the customized management capability that analyzes individual health conditions and pressure ulcer risk factors to enable personalized position adjustments tailored to each user's specific needs.



Bowel Movement Sensor System



The intelligent bowel movement detection component of the SmartHealthCare System provides accurate monitoring through sensors that detect events when preset thresholds are reached. This technology enables real-time processing of bowel movements, dramatically improving patient care and comfort.

The system enhances hygiene management through functions that assist with proper handling and cleanliness maintenance after bowel movements, effectively preventing potential skin conditions that commonly affect bedridden patients.

An automatic notification system promptly alerts caregivers through kiosks and a mobile app when sensors detect bowel movements, ensuring timely response and maintaining patient dignity.

This revolutionary approach addresses common challenges in

traditional patient care settings where nursing staff often struggle with the physically demanding task of continually checking patients' conditions. The system reduces labor costs while improving service quality, creating a more dignified experience for patients.

By providing immediate alerts, the system prevents unsanitary conditions that could lead to skin rashes and infections, while also alleviating anxiety for guardians unable to provide direct care.

The SmartHealthCare System is especially beneficial for patients with dementia, incontinence, or mobility impairments, offering improved management and comfort.



• LEETEK Life Co., Ltd.

2F, 47, Ojeong-ro, Ojeong-gu, Bucheon-si, Gyeonggi-do, Republic of Korea

Tel: (82-32) 556-9838

E-mail: [email address removed]

Website: <https://www.leeteklife.com>

Medical Devices

Pressure Ulcer Prevention Electric Cushion

[INQ. NO. 2505C08] NEOX is Korea's first medical device-certified electric cushion for pressure ulcer prevention. This innovative self-moving cushion incorporates air cells with built-in pneumatic sensors that provide posture adjustment services. The product successfully secured an exclusive export contract worth approximately 5 billion KRW over three years with a partner company in Kobe, Japan, in April 2025.



The cushion effectively implements the three essential elements of pressure ulcer prevention: posture stability, pressure distribution, and pressure relief. Its hybrid structure, combining an air cushion with foam supports, ensures stability for the buttocks and thighs when seated.



The air pocket structure of the cushion achieves pressure distribution when sitting, a feature for which global PCT patent applications have been completed. Additionally, the cushion implements pressure relief functionality through air circulation controlled by pneumatic adjustment, another technology with completed global PCT patent applications.

Wheelchair Sound Wave Vibration Exercise Device

NEOSONIX is a self-moving healthcare device that applies woofer speaker-based sound wave vibration technology instead of traditional motor methods. This innovative approach allows wheelchair users and individuals with limited mobility to exercise safely.

The device resolves accessibility issues by enabling safe exercise while using manual wheelchairs, electric wheelchairs, walkers, or canes. It offers part-specific exercises according to sound frequency (Hz), with 3-60Hz exercise frequency and 10-level intensity precision adjustment in a vertical movement sound wave exercise machine design.



NEOABLE Co., Ltd. is a social venture company specializing in manufacturing moving medical devices. The company focuses on solving pressure ulcer problems for the elderly and disabled through ICT solutions. Its main business progressively develops hardware, software, and platforms related to pressure ulcers.

The company's major projects include pressure ulcer prevention solutions (cushion mats and beds), pressure ulcer monitoring systems, and products utilizing sound wave vibration technology for disabled individuals, wheelchair users with mobility difficulties, and seniors.

• NEOABLE Co., Ltd.

#202, 130-2, Donghwagongdan-ro, Munmak-eup, Wonju-si, Gangwon-do, Republic of Korea

Tel: (82-33)900-6101, (82-10)8111-6101

E-mail: zzzza123@neoable.co.kr

Website: <https://neoable.co.kr>

Healthcare Products

AI Smartwatch

[INQ. NO. 2505C09] InHand-Watch is an advanced AI-based Smartwatch developed as a “doctor on your wrist” to solve medication non-adherence issues and their associated social costs. This innovative On-Device AI Smartwatch connects with ChatGPT to provide personalized healthcare services including AI health coaching, medication management, and diet support.



The Smartwatch can analyze various medication behaviors to collect real-world data about what medications users take and when they take them. This cutting-edge technology helps elderly individuals and patients with chronic or mental illnesses manage their health more easily by automatically tracking medication intake and providing timely reminders.

InHand-Watch shares users’ real-world data and health records in real-time with caregivers and medical professionals, creating a more efficient management system. The comprehensive solution includes not only the Smartwatch but also a companion app for personalized medication management that enables automatic medication recording and side effect management.

The platform also allows for diet management and the collection of personal life logs for customized health management. Additionally, a web-based management system enables caregivers and medical professionals to efficiently monitor patients remotely.

InHandPlus has developed the world’s first Smartwatch-based behavioral analysis AI algorithm that automatically analyzes medication adherence and timing for watch wearers. By analyzing medication behaviors and generating real-world data, the system provides data-driven, personalized medication management services.

InHandPlus was established in 2019 to address the growing issue of medication non-adherence in society. The company’s name reflects its mission to “analyze all objects in hand,” enabling analysis of various forms of medication intake including inhalers, multiple medications, self-injections, glucose meters, and food.

The company has been recognized for its innovation, receiving CES Innovation Awards in 2022 and 2023, and being designated as an innovative procurement item in 2024.



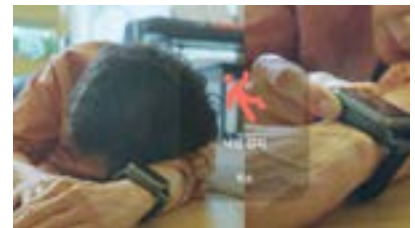
• InHandPlus

#113, 8F, 507, Teheran-ro, Gangnam-gu, Seoul, Republic of Korea

Tel: (82-70)4755-8000

E-mail: biz@inhandplus.com

Website: <https://www.inhandplus.com>



Rehabilitation Equipment

Finger Muscle Workout Glove

[INQ. NO. 2505C10] Finger muscle workout glove is a functional glove designed to naturally extend fingers with limited strength, helping users perform various hand function exercises. This innovative rehabilitation tool is specifically targeted for individuals with hand difficulties or those needing to improve hand strength.

The glove offers multiple therapeutic benefits including training for finger flexion and extension movements, providing various functional gripping and holding exercises, assisting with hand extension movements, and allowing individual tension adjustment for each finger. Available in left and right versions with sizes ranging from S to M, L, and XL, the glove accommodates different hand dimensions.



Featuring a palm-exposed design that considers breathability and ease of wearing, the glove incorporates silicone material to prevent slipping during gripping and holding exercises. Users can adjust elastic straps to assist with various types of finger training functions.

The glove combines comfortable wearability with firm support, making it suitable for extended use. It is especially recommended for rehabilitation after stroke, brain injury, or neurological diseases. The company is also developing additional finger products and foot-related products with names yet to be determined.



The elastic straps alleviate weakened finger strength and provide appropriate positioning of the hand and fingers for functional training. By delivering adjusted tension to each finger according to its weakened strength, the glove assists with functional movements such as gripping and extending.

Park Rehabilitation Exercise Center is a specialized rehabilitation institution focused on patient functional recovery and quality of life improvement. The center provides customized rehabilitation programs tailored to each patient's condition and goals, helping patients recover quickly through professional

treatment and warm care.

The center's philosophy, "Stand again → Walk again → Live again," emphasizes that rehabilitation exercise is not merely treatment but a process of finding a new life. Led by a director with 20 years of experience from rehabilitation hospitals, it is the only rehabilitation center in Korea with 10 years of continuous operation.

• Park Rehabilitation Exercise Center

3F, 713, Dongil-ro, Uijeongbu-si, Gyeonggi-do, Republic of Korea

Tel: (82-10)7256-8277

E-mail: aaa8900@naver.com

Website: 박재현재활센터.com



Healthcare Products

Body Analysis Platform

[INQ. NO. 2505C11] Tango Body is a comprehensive body analysis platform that utilizes CCD (Charge-Coupled Device), Depth camera, and pressure measurement device (FSR Mat) to analyze users' body type and balance. This innovative system predicts musculoskeletal disease risks based on the collected data and performs precise diagnostics of physical functions through range of motion (ROM) measurements.

The platform provides personalized exercise programs based on analysis results, supporting users in systematic health management in their daily lives. All results are synchronized with a mobile application for enhanced user convenience, allowing individuals to easily track physical changes and become active participants in maintaining their own health.



Electric Bed



Tango T-Bed and S-Bed are proprietary products developed by TANGO PLUS, based on a 3-motor system that supports comfortable posture adjustment and easy living for users. Notably, the Tango S-Bed features an innovative structure where part of the bed can be separated as a mobile unit, allowing users to move outside the bed.

This unique design provides more freedom for seniors to spend time with family members within their homes. Both products are registered as welfare equipment and certified elderly-friendly products, enhancing users' quality of life by

providing freedom of movement and opportunities for family communication.

Gait Analysis System

Tango STEP was developed to prevent falls among elderly individuals, utilizing Depth cameras and pressure sensor mats to precisely analyze users' walking patterns. This system enables early detection and prevention of fall risks, allowing users to maintain safer and more confident daily activities.

TANGO PLUS envisions providing welfare technology and services that preserve seniors' dignity, developing various solutions that enable elderly individuals to lead more convenient and dignified lives. The company's self-developed separable electric bed (T/S-Bed) provides both convenience and freedom of movement for seniors.

• Optonics Co., Ltd.

130-2, Donghwagongdan-ro, Munmak-eup, Wonju-si, Gangwon-do, Republic of Korea

Tel: (82-62)973-1260

E-mail: tangoplus@tangoplus.co.kr

Website: <https://www.tangoplus.co.kr>



Senior Fitness Equipment

Smart Gateball Exercise System

[INQ. NO. 2505C12] MOINFIT G is an immersive gateball exercise system developed to promote physical activity and emotional stability for elderly individuals in nursing homes, day care centers, and welfare centers where outdoor activities may be difficult.

Unlike conventional cognitive training and dementia prevention exercises conducted in these facilities, this innovative system presents a new paradigm in senior healthcare by comprehensively enhancing emotional stability, cognitive function, and physical health through leisure cultural activities.

The system can be installed wherever a TV is available, and its compact design makes efficient use of space. Users simply unfold the putting mat during use and store it in a dedicated storage container when finished. MOINFIT G accommodates up to ten users simultaneously and enables remote competitions through network connections between installed locations.

Through various content options including indoor courses, outdoor courses, golf putting, and practice modes, users can enjoy pleasant hobby activities indoors

while performing training for emotional stability, cognitive function improvement, and physical strengthening. The system reduces the risk of injuries that might occur in golf or park golf.

MOINFIT G encourages communication and teamwork as white and red teams compete against each other. Players can calculate strokes according to scores and analyze paths, allowing cooperative gateball gameplay. This approach makes the activity both physically beneficial and socially engaging for senior participants.

MOIN HEALTHCARE CO., LTD. was established in 2023 based on the philosophy of bringing together good ideas, good people, and good technology to create a better tomorrow. The company's main business areas include smart healthcare, rehabilitation, sports, and

senior care, providing research and development, distribution, and related technical services.

The company's flagship products include biomechanical measurement and evaluation systems, smart gateball exercise machines, gait rehabilitation training robots, and AI exercise functional assessment devices based on electromyography. MOIN HEALTHCARE continues to research and develop innovative senior healthcare and fitness products for rapidly aging countries in Asia, the Middle East, and Europe.

• Moin Healthcare Co., Ltd.

#302, 5, Iksan-daero 56-gil, Iksan-si, Jeonbuk-do, Republic of Korea

Tel: (82-10)9476-0264

E-mail: moinhealthcare@naver.com

Website: www.moinhealthcare.com

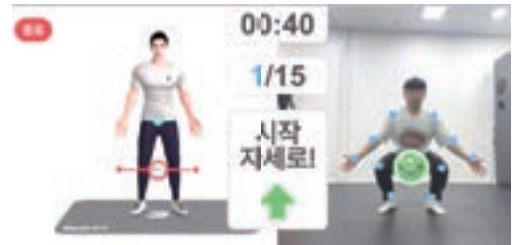


Digital Healthcare Equipment

Customized Exercise Prescription System

[INQ. NO. 2505C13] Real PT Customized Rehab Solution is an advanced exercise prescription system consisting of dedicated devices, applications, and administrator programs. The system features a cyclical structure of examination, evaluation, exercise prescription, and reassessment to provide comprehensive fitness management.

The platform conducts various physical examinations and delivers customized exercise content that cycles through the prescription program. Key exercise prescription contents include posture examination leading to posture improvement exercises, fitness testing followed by fitness exercise prescriptions, joint range of motion testing resulting



in flexibility exercise prescriptions, chronic disease management with corresponding exercise prescriptions, and cognitive testing paired with cognitive enhancement exercises.

The companion application services include programs for activity promotion, strength training, meal management, and medication management. Real PT's exercise prescription system has proven its reliability by obtaining Korea's first medical device GMP Class 2 certification and registration with the Public Procurement Service marketplace.

The system possesses distinctive technical capabilities, particularly in accommodating wheelchair users, providing cognitive exercise

prescriptions for developmental disabilities, and offering disability-specific exercise prescriptions. It delivers customized stretching, strength training, and activity prescriptions according to health conditions for users ranging from children to elderly individuals.

Additionally, the system enables group exercises categorized by disease and health level, along with a dedicated application for home use, allowing simultaneous health management for many people. This comprehensive approach ensures safe and continuous health management for diverse user populations.



KOREA BODY INFORMATION Corp. is a specialized company that develops and operates artificial intelligence digital healthcare exercise prescription systems based on the vision of "improving the health and fitness of all citizens by 10%." Currently, approximately 2.8 million people use the company's services for health management.



Through dedicated devices equipped with cameras and touch screens, along with mobile applications, the company precisely measures and analyzes posture, physical strength, and joint flexibility to provide personalized stretching and strength training programs. Their products are distributed to various public and private sectors including educational institutions, facilities for disabled people, and welfare centers.

- **Korea Body Information Corp.**
 #402, 120, Eonju-ro, Gangnam-gu, Seoul, Republic of Korea
 Tel: (82-2)6338-3673
 E-mail: realpt@gympt.net
 Website: www.realpt.co.kr

Elderly Care Products

AI Emotional Care Robot

[INQ. NO. 2505C14] Sunshine is an AI-powered emotional care robot designed to support the emotional stability and healthy daily routines of elderly individuals. This innovative robot analyzes users' lifestyle patterns and emotional states to provide integrated support features including personalized medication reminders, schedule notifications, health content delivery, and emergency detection.



The robot facilitates emotional connection through voice dialogue and touch interaction, creating a grandchild-like companionship experience for users. It also includes voice messaging capabilities that enable communication with caregivers and family members, helping maintain meaningful emotional bonds despite physical distance.

Sunshine offers diverse leisure programs such as dementia prevention exercises, religious messages, music, and storytelling, contributing to a more vibrant and engaging lifestyle for older adults. The system is equipped with high-performance sensors capable of detecting movement in all directions up to 5 meters, monitoring the user's condition in real time.

If no response is detected for a certain period, the robot automatically initiates a wellness call to connect with caregivers through the "Hyodol Safe Call" feature. This provides peace of mind for family members and ensures timely assistance when needed.



In 2024, Sunshine received global recognition for its technological innovation and social value, winning the GLOMO Award for "Best Mobile Innovation for Connected Health and Wellbeing" at MWC, the world's largest mobile technology exhibition. This prestigious award acknowledges the system's contribution to enhancing the quality of life for elderly individuals.

Hyodol Ltd. is a healthcare-specialized robotics company developing AI-powered emotional care robots for the elderly and those requiring daily support. A distinctive feature that sets Hyodol apart is its proprietary "Hyodol AI Chat+" interactive real-time conversation model, which enables natural, human-like dialogue and emotional engagement with older adults.

The company actively participates in public pilot programs in partnership with local governments and welfare institutions across Korea, continuously advancing its technology and expanding services to alleviate social isolation and improve quality of life for the elderly.

• Hyodol Co., Ltd.

#1714/1716, 282, Hagui-ro, Dongan-gu, Anyang-si, Gyeonggi-do, Republic of Korea

Tel: (82-2)562-8055

E-mail: jhy557@hyodol.com Website: <https://hyodol.com>



Healthcare Products

Near-Infrared Care Pad

[INQ. NO. 2505C15] OnRills All-in-One Care Pad is a comprehensive home care solution that brings hospital-grade pain management into the home. Available in standard and large sizes to accommodate different body types and care needs, this versatile pad is designed to address pain in major body areas including neck, shoulders, abdomen, lower back, and knees.

The flexible pad structure naturally conforms to the body, allowing for even distribution of near-infrared heat. User-friendly features include 3-level temperature control, automatic timer, and a lightweight controller that enhance both convenience and safety. When used together with the care cushion and care belt, the system provides comprehensive pain management for the entire body, including lower extremities and smaller areas.

This product has passed KC electromagnetic compatibility testing and undergone continuous improvements based on feedback from domestic and international home care markets. Combining scientific principles with tangible user benefits, it has gained trust among diverse consumer groups both in Korea and abroad.



Localized Care Pad



OnRills Localized Care Pad is a minimalist solution designed to deliver concentrated heat to smaller areas such as wrists, knees, ankles, and abdomen. Based on the same near-infrared wavelength technology used in all OnRills products, this compact device can be secured to specific areas using Velcro straps for targeted pain relief.

Its portable size makes it ideal for on-the-go use, allowing users to easily address pain in frequently used body parts throughout their daily activities. The design focuses on convenience while maintaining the therapeutic benefits of near-infrared technology.

Near-Infrared Donut Cushion

OnRills Near-Infrared Donut Cushion is a specialized seated therapy device designed for lower body circulation issues and pain relief, particularly for conditions like hemorrhoids, constipation, and menstrual pain. The product utilizes near-infrared wavelength technology that penetrates deep into lower body tissues to promote healing.

Its donut-shaped structure reduces pressure on sensitive areas, while features like high-elasticity cushioning, detachable heating pads, and temperature maintenance systems enable comfortable therapy while seated. This innovative design allows users to receive effective care without interrupting their daily activities.

BINGHANDBRO launched the healthcare brand OnRills in 2022 with the vision of providing "hospital-grade care at home." The company develops products that make medical-grade near-infrared technology accessible for everyday use, addressing chronic pain and quality of life issues affecting modern individuals.



• BINGHANDBRO

#618, 96-5, Bugwang-ro, Guro-gu, Seoul, Republic of Korea

Tel: (82-2)1660-2084

E-mail: rudylee@bigbrohand.com

Website: <https://www.onrills.com>

Medical Devices

Microwave Thermal Therapy Device

[INQ. NO. 2505C16] Oncella® is an advanced deep thermal therapy device based on microwave technology, offering a high-performance thermal energy solution capable of delivering heat precisely to deep areas of the body beyond the skin surface. Unlike conventional radiofrequency (RF) or far-infrared methods, Oncella® uses microwaves to achieve deeper and more uniform heat penetration, resulting in more diverse and powerful effects such as body lifting, muscle relaxation, and improved blood circulation.



A significant differentiating feature is the ability to use the device in a non-contact manner even while wearing clothes. No special creams or gels are required, and since it doesn't directly touch the skin, it offers hygienic and convenient care. The system features a small, lightweight handpiece designed to reduce practitioner fatigue and adopts a user-friendly design suitable for both home and professional use, allowing users to deliver heat to necessary areas themselves.

Since its release, Oncella® has generated high interest and reuse rates from actual users in medical, beauty, and sports fields, proving its efficacy and convenience. Its unique advantages include deeper heat transfer compared to radiofrequency, more substantial body temperature-raising effects than far-infrared, and operation without skin contact.



Bokyung Engineering Co., Ltd. was established in 2002 and has built technical expertise in the mechanical equipment field over many years. Based on accumulated technology and field experience, the company expanded its business area to the medical and beauty convergence field, officially entering the healthcare market in November 2024 with the release of Oncella®, a deep thermal device utilizing microwave technology.



The company is currently pursuing overseas market expansion centered on Japan, Southeast Asia, the United States, and the Middle East. Since the product launch, it has received high interest and satisfaction from domestic and international users, building competitiveness in the global market based on product performance and convenience.

- **Bokyung Engineering Co., Ltd.**
1316, 201, Hyangdong-ro, Deogyang-gu, Goyang-si, Gyeonggi-do, Republic of Korea
Tel: (82-2)3159-2262
E-mail: Bkeng2002@naver.com
Website: www.boky.co.kr

Healthcare Products

Nasal Dilator

[INQ. NO. 2505C17] NOSK Nasal Dilator SnoreX is an advanced respiratory aid designed to be worn inside the nasal cavity, expanding narrow nasal passages and promoting smooth airflow. This innovative device addresses the increasing incidence of snoring and rhinitis that has risen alongside modern obesity and sleep apnea rates.

Featuring an ergonomically designed dual-ring structure, SnoreX supports natural, effortless breathing. Its split-ring design flexibly responds to movement during use, ensuring comfortable fit without discomfort. Manufactured using biocompatible, non-toxic materials, the device offers superior safety and durability for long-term use.

The one-size-fits-all design eliminates sizing concerns, making it accessible for all users. When worn during sleep, SnoreX enhances airflow, thereby reducing snoring. During physical activity, it supports improved breathing efficiency, helping maximize exercise performance. Additionally, wearing the device while studying has been found to contribute to enhanced concentration and stress reduction.



Manual Chest Wall Vibration Device

NOSK Breathing Mom is a next-generation manual chest wall vibration device that overcomes the limitations of conventional



models, which only support exhalation. Incorporating innovative technology, this device simultaneously supports both inhalation and exhalation, enhancing chest wall vibration therapy and pulmonary function recovery with significantly improved efficiency.

This technological advancement

received formal recognition with a Gold Medal at the 2022 Seoul International Invention Fair and the Commissioner's Award at the Korea Invention Patent Exhibition. Through consistent use, the device can contribute to improving cardiopulmonary endurance, increasing lung capacity, enhancing respiratory health, and boosting overall physical performance.

Lumbar Support Belt

NOSK Lumbar Support Belt is a high-performance orthopedic device scientifically designed based on the principle that supporting the lower back with hands provides relief. It helps correct misaligned or curved lumbar vertebrae and stabilizes the spine by promoting proper posture and alignment.

The belt features adjustable internal support components that can be inserted or removed as needed, with four high-elasticity support stays on both sides that effectively stabilize the erector spinae muscles. Constructed with premium neoprene material, it provides a snug yet comfortable fit across waist sizes from 24 to 40 inches.

Dream Air Co., Ltd. is a leading healthcare company globally recognized for its commitment to quality and safety, holding prestigious certifications including ISO 9001, ISO 14001, U.S. FDA registration, CE (Europe), HALAL, and TGA (Australia). The company has also won gold medals at the world's three major invention exhibitions in Geneva, Germany, and the United States.



• Dream Air Co., Ltd.

#713, 31, Galmachi-ro 244beon-gil, Jungwon-gu, Seongnam-si, Gyeonggi-do, Republic of Korea

Tel: (82-31)732-1281

E-mail: moskkorea@naver.com Website: www.nosk.com

Senior Care Products

Portable Sitz Bath Warm Water Bidet

[INQ. NO. 2505C18] SR-5000MB is Korea's first developed and manufactured premium portable bidet toilet that combines bidet and warm water sitz bath functions with a portable toilet. Unlike conventional portable toilets, this innovative device provides warm water anal cleansing and drying functions, allowing users to use the toilet comfortably even in cold winter conditions.

The system offers warm water sitz bath functionality that is effective for common elderly conditions including anal diseases, prostatic hyperplasia, and urinary incontinence. This comprehensive approach to hygiene and treatment makes it particularly valuable for elderly care settings where mobility may be limited.

As aging populations become an increasing concern not only in South Korea but worldwide, this product enhances convenience, hygiene, and human dignity for both elderly individuals and their caregivers, positioning it as a promising product with excellent future prospects in the growing senior care market.

The SR-5000MB has uniquely obtained quality certifications including the Group Standard Certification and designation as an Elder-Friendly Superior Product, being the first and only bidet-type portable toilet to receive these recognitions. These certifications underscore the product's excellence and suitability for its target demographic.

Key functions of the system include portable toilet functionality, warm water cleansing, warm air drying, heated seat, and warm water sitz bath capabilities. This comprehensive feature set addresses multiple needs of elderly users and their caregivers in a single integrated device.

Recognizing that the current premium model may be cost-prohibitive for some users, Bowontech

is currently developing a more affordable cleansing-type portable toilet. A prototype of this new model will be displayed at upcoming exhibitions, expanding the company's product line to reach a broader market segment.

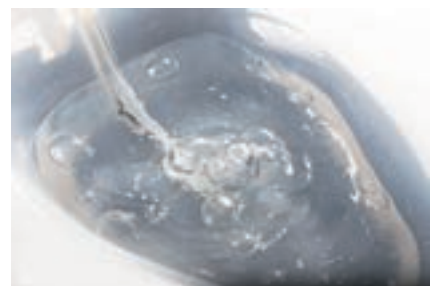
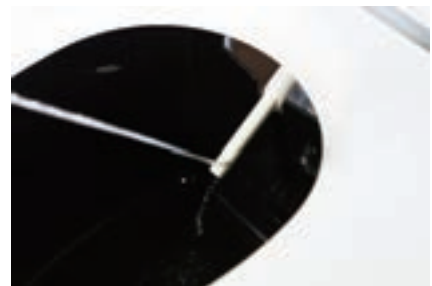
Bowontech was established in October 2009 and is dedicated to developing products essential for our aging society. The company continues to leverage its technological expertise to create innovative solutions that address the unique challenges of elderly care, with all employees striving to develop the organization as a socially responsible enterprise that contributes positively to society.

• Bowontech

#1003, C-dong, 261, Doyak-ro, Wonmi-gu, Bucheon-si, Gyeonggi-do, Republic of Korea

E-mail: Ko7765@naver.com

Website: www.bowontc.co.kr



Medical Devices

Alternating Pressure Mattress

[INQ. NO. 2505C19] CAREPRO is an innovative alternating pressure mattress that represents a revolutionary shift from analog to digital technology in patient care. This advanced medical device focuses on reducing the burden on caregivers while providing improved conditions for patients requiring long-term bed rest.

The system features an LCD display that allows real-time monitoring of alternating pressure and fixed mode status, giving caregivers immediate visual feedback on operational settings. Equipped with a proprietary electronic low-noise DC motor, the mattress offers adjustable air volume control across five levels, enabling customization according to individual patient needs and comfort preferences.



CAREPRO delivers immediate feedback through rapid electronic air chamber valve response, ensuring timely pressure adjustments. The integrated temperature and humidity sensors provide continuous monitoring of the patient's indoor environment, which is crucial for effective pressure ulcer prevention and treatment.

A significant improvement over conventional products is the reduced preparation time, greatly enhancing convenience for both patients and caregivers. The system's cutting-edge technology has been specifically designed to enable more efficient patient care by nursing staff and family

members, addressing the practical challenges of long-term care situations.

JM Safety is a specialized medical device manufacturer focused on developing and producing medical-grade alternating pressure mattresses. The company holds relevant quality certifications including ISO:13485 and registration as a Class 2 GMP medical device manufacturing facility, demonstrating its commitment to maintaining high-quality standards in medical device production.



The company has received recognition for its excellent product quality through various awards, including a commendation from the Minister of Health and Welfare. Beginning as an OEM manufacturer with Open GMP certification, JM Safety has grown into a specialized pneumatic medical device manufacturer.

Through continuous research and development, the company prioritizes patient comfort and health, striving to provide enhanced care environments through technological innovation while contributing to improving the quality of life for both patients and caregivers.



• Jmsafety

3F, 19, Beolsaejeolli-gil, Gunpo-si, Gyeonggi-do, Republic of Korea

Tel: (82-31)477-9201

E-mail: jmsafety@jmsafety.co.kr

Website: www.carepro.at

Digital Education Equipment

Educational Kiosk

[INQ. NO. 2505C20] Enbrain Kiosk is an innovative educational device designed specifically for digitally vulnerable populations in today's contactless era. This specialized kiosk provides customized experiential education services tailored to different situations and locations where kiosks are commonly used, helping bridge the digital divide for seniors and other vulnerable groups.



The system features 12 different multi-use facility contents that simulate actual kiosks used in various real-life settings, providing identical education and experiences to those encountered in daily life. Through this practical approach, the kiosk effectively helps reduce digital disparities for seniors and vulnerable populations who often experience digital exclusion.



The product line includes multiple configurations to suit various implementation needs: 21.5-inch desktop/stand models, 27-inch desktop/stand models, 32-inch and 43-inch stand models, and a 24-inch tablet model designed specifically for instructors. This diversity of options enables flexible deployment across different educational and institutional settings.

Content is organized into three main categories focusing on essential daily activities: daily life support (hospital certificate issuance, unmanned civil service certificate issuance, bank ATM, pharmacy prescription), meals and food (food court, fast food, coffee shop, ice cream discount store), and travel leisure culture (KTX reservation, express bus reservation, movie theater reservation, self-checkout).

The system also includes brain health game content covering five cognitive domains – agility, judgment, memory, thinking, and concentration – with a total of 19 different games. Additionally, the kiosk offers mental health test content for



cognitive function, depression, and stress, providing simple mental health assessments and test results that serve as digital therapeutics for cognitive prevention and enhancement training for seniors.



Careyou was established in July 2014 as a social enterprise focused on cognitive prevention, a global social challenge. Leading cognitive improvement through IT-based smart aging solutions, the company was selected as a "Cognitive Improvement Leading Company" in 2020 and operates in key business areas including digital care case management program development and services, cognitive training and mental health test app development and services, digital cognitive prevention and digital capacity enhancement education, and social enterprise consulting and social economy education.

• Careyou

#405, 25, Simin-daero 248beon-gil, Dongan-gu, Anyang-si, Gyeonggi-do, Republic of Korea

Tel: (82-31)424- 7294

E-mail: info@careyou.org

Website: www.careyou.org

Healthcare Product

Eye Exercise Device

[INQ. NO. 2505C21] Personal Scope-EX is an innovative wearable device designed to improve vision through comprehensive eye muscle training. Developed through over 40 years of vision therapy research, this system implements multiple exercises that activate the autonomic nervous system muscles of the eyes, addressing vision deterioration caused by excessive exposure to digital screens and close-up work.

The device delivers five integrated training functions working synergistically for complete vision therapy. BAF (Binocular Auto Focus control) trains binocular fusion, while EME guides eyeball movements through eight directions using subtle light stimulation. PAT helps the eye's lens adjust to different distances, and IAT trains the iris to regulate light effectively. The device also includes vibration massage for relaxing eye-area pressure points.

What distinguishes this system is its ability to facilitate complex eye exercises that would be difficult to perform independently. As our eyes operate on the autonomic nervous system, comprehensive movement training maximizes exercise effectiveness for maintaining eye health. The device allows users to check vision changes after just five minutes of use, with daily application helping those with myopia, hyperopia, astigmatism, presbyopia, dry eyes, and even strabismus.



Personal Scope-EX has achieved remarkable international recognition, winning the Grand Award in the International Invention Innovation Competition in Canada and Malaysia, plus Gold Medals at International Exhibition of Inventions in the USA, China, and Taiwan. It has been selected as a winner of the "Korea Customer Satisfaction Brands" for ten consecutive years and is registered with the U.S. FDA and Malaysian MDA as a Class 1 device.

Usage involves a structured five-minute session with vibration periods for relaxation and active exercise following red lights. For optimal results, 2-3 consecutive sessions are recommended, used frequently throughout the day while avoiding excess to prevent fatigue. This non-invasive approach to vision improvement is suitable for all ages and usable with existing prescription eyewear, helping users address various vision conditions through consistent application of the scientifically designed exercises.

IZON is a specialized company dedicated to vision improvement through eye exercise technology, drawing on more than 40 years of expertise in vision training. The Personal Scope-EX is a patented binocular vision therapy device that incorporates the key points of comprehensive eye exercise, allowing for complex training that addresses multiple aspects of vision health.



• IZON

701, 107, Dunchon-daero, Jungwon-gu, Seongnam-si, Gyeonggi-do, Republic of Korea

Tel: (82)1566-7348

E-mail: jang5254@naver.com

Website: www.vision365.kr

Digital Equipment

Barrier-Free Kiosk

[INQ. NO. 2505C22] B-TOSK is a barrier-free kiosk device designed with special consideration for people with disabilities, the elderly, and children. Developed in response to the rapid growth of the contactless market due to COVID-19 and rising labor costs, this innovative device addresses the accessibility, usability, and convenience needs of socially marginalized groups.

The system incorporates enhanced accessibility features, user-customized interfaces, security and identity verification technology, and AI-based interfaces to ensure that all users can interact with the kiosk regardless of their physical abilities or technical expertise. This thoughtful design approach makes digital services more inclusive for previously underserved populations.

Safety Management Kiosk

S-TOSK is a pioneering safety management kiosk device created for the prevention of serious accidents in industrial settings. This system applies digital safety and health management measures in workplace environments to prevent major disasters and fulfill obligations related to the establishment and implementation of safety and health management systems.



payment systems under its own brand.

The company's specialized product line includes kiosk devices for people with disabilities, the elderly, and children; safety management kiosk devices for the prevention of serious accidents; and AI-based digital smart pole safety management systems. In the automotive sector, YK AUTO TECH performs cutting operations using 5-axis laser processing equipment after molding automobile bodies with dies.

• YK Auto Tech

#605, 3-Ba, 84, Mayu-ro 32beon-gil, Siheung-si, Gyeonggi-do, Republic of Korea

Tel: (82-31)434-9166

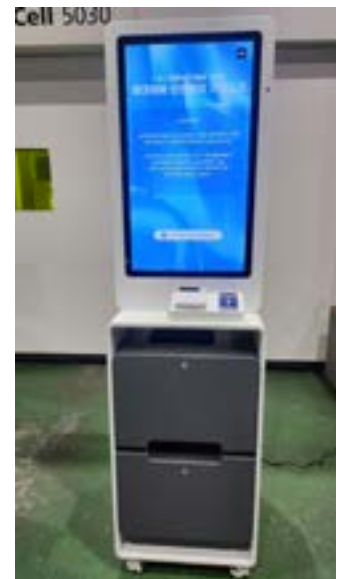
E-mail: yjh2017@yk-autotech.com

Website: www.yk-autotech.com



The kiosk verifies and authenticates workers' identities while also checking their completion of safety management training and proper use of safety protective equipment. It prints safety education lists and safety protective equipment lists for self-checking and stores information about the checked education and safety equipment, creating a comprehensive digital safety monitoring system.

YK AUTO TECH is a multifaceted manufacturing company that processes and produces automotive body parts using laser cutting, bending, and sheet metal fabrication, while also manufacturing kiosk devices. As a total solution provider for kiosks, the company produces multipurpose kiosk devices with



Health Care Product

Ultrasonic Joint and Muscle Massager

[INQ. NO. 2505C23] ACELLCARE is a home-use ultrasonic joint and muscle massager developed with an all-Korean one-stop system, from product development to production and packaging. This innovative device utilizes the same 1MHz ultrasound technology found in pregnancy or health examinations, making it a safe alternative to electronic devices that emit electromagnetic waves.

The massager operates silently using ultrasonic wave technology similar to what dolphins and bats use, allowing users to comfortably use it even next to sleeping children. Its concentrated ultrasonic energy, vibrating one million times per second, penetrates deep into the body to raise temperature and deliver optimized massage for different body areas.



Weighing just 167g, the device features remarkable portability. When used with its dedicated auxiliary battery, ACELLCARE can be used anywhere without spatial limitations.

The device offers both normal and power modes to accommodate different body areas - normal mode for areas with thin skin and muscle layers like fingers, jaw joints, and foot soles, while power mode is ideal for joints and thicker muscle areas like shoulders, knees, and lower back.

The device provides six adjustable intensity levels, allowing customized care for different body parts. This represents a significant advancement

over conventional home healthcare devices that only temporarily stimulate the skin surface with LED, laser, or radio frequency technologies.

Since its market launch in August 2023, ACELLCARE has sold 20,000 units, demonstrating its effectiveness and popularity. The device has undergone rigorous performance testing at the Korea Testing Laboratory, receiving multiple certifications that validate its ultrasonic output and frequency accuracy.

For those dealing with uncomfortable joints and muscles in their busy daily lives, ACELLCARE offers a convenient way to provide consistent care at home.



• KL Corporation Co., Ltd.

1213, 19, Maeyeong-ro 159beon-gil, Yeongtong-gu, Suwon-si, Gyeonggi-do, Republic of Korea

Tel: (82-70)7802-7720

E-mail: acellcare@naver.com

Website: acellcare.com

Health Food Products

Natural Fermented Vinegar

[INQ. NO. 2505C24] Wasong natural fermented vinegar is a premium health product made from native red rock pine grown in the pristine environment of Hwacheon, South Korea. This exceptional vinegar undergoes a meticulous fermentation and aging process that spans 2-5 years, resulting in a product with remarkable health benefits and a clean, pleasant taste profile with no harsh aftertaste.



The vinegar is crafted from perennial native red rock pine, which has been recognized since the 12th century for its medicinal properties in traditional Korean medicine. Rock pine contains special active ingredients that have been scientifically studied for their anti-cancer, anti-inflammatory, and anti-diabetic properties, along with benefits for weight management and skin health.

When consumed regularly, the vinegar helps boost immunity, acts as a natural disinfectant, aids in preventing geriatric diseases, and promotes blood circulation for fatigue recovery. The product also supports skin beautification, alleviates diabetes effects, improves digestive health, and helps prevent liver and intestinal diseases through its detoxifying properties.

Rich in vitamins A and C, potassium, calcium, folic acid, amino acids, polyphenols, and flavonoids, this natural fermented vinegar has a repurchase rate of over 60%. Its antioxidant properties help remove free radicals from the body, reducing cholesterol accumulation and preventing various adult-onset diseases. For optimal benefits, it is recommended to dilute the vinegar before consumption.

HaedongHwacheonWasong Agricultural Corporation began as a rock pine cultivation unit in 2015 and established the company in 2023. The company focuses exclusively on developing products from native Korean rock pine, with natural fermented vinegar becoming their signature offering that has gained popularity through word of mouth domestically

and internationally.

The company has received numerous recognitions, including an award from the Ministry of Agriculture, Food and Rural Affairs of Korea, the prestigious ITQI Golden Star Award from Brussels in June 2019, and certifications from US FDA, Halal, Vegan, FSSC 22000, along with registered trademarks and patents for their innovative health product.

- **HaedongHwacheonWasong Agricultural Corporation**

14, Jangchollil-gil, Sangseo-myeon, Hwacheon-gun, Gangwon-do, Republic of Korea

Tel: (82-33)441-8402

E-mail: kwasa1002@gmail.com

Website: <http://www.hcfarm.kr>



Health Care Products

Wheelchair Table

[INQ. NO. 2505C25] Mamapum Wheelchair Table is a functional and eco-friendly table designed to provide comfort for disabled children. It was developed to prevent scoliosis in children who rely on wheelchairs or chairs for support, as they often struggle to maintain an upright posture. The table offers an affordable alternative to expensive assistive devices, which can cost between 1.5 to 4 million won.

The product won the Minister of Health and Welfare Award at an invention competition and has been patented. It is available in small (for children), medium (for teenagers/adults), and large (for adults/larger body types) sizes, with color options of dark blue and blue.



Diaper

Mamapum Premium Diapers are designed for disabled children and teenagers who require lifelong diaper use. As they grow out of infancy, finding appropriately sized diapers becomes a challenge due to the lack of products tailored to their body types. Expensive foreign diapers are often the only option, but even those may not fit properly.

A mother who faced this difficulty with her own child developed Mamapum Premium Diapers to help other families in similar situations. These diapers feature a cotton-like texture, urine indicator line, double-layered absorbent pad, ultra-strong absorbent material, re-attachable tape,

strong embossing, and double leak-prevention barriers. They are produced entirely with domestic facilities and are available in small and medium sizes with a magic tape fastening system.

Mamapum Co., Ltd. is a social enterprise founded by parents of children with cerebral palsy disabilities. The company strives to alleviate the inconveniences and risks faced by disabled individuals and create a brighter world where everyone can live together. All products are manufactured using 100% domestic facilities to ensure safety and reliability. Each product undergoes thorough evaluation and research at every development stage to meet high standards of stability and efficiency.

- **Mamapum Co., Ltd.**

#104, 29, Jungnangmyeok-ro 4-gil, Jungnang-gu, Seoul, South Korea

Phone: (82-70)4618-7177 / (82-10)2836-0466

Email: mamapum@naver.com

Website: www.mamapum.com



Health Care Products

Automated Urination Detection & Suction Device

[INQ. NO. 2505C26] HYGERA Carebot is a standout product designed to revolutionize incontinence care. It extends beyond simple urination detection and alert systems, offering capabilities to predict and prevent severe urinary disorders like urinary retention. The device's technology accumulates user data, which holds significant medical and research value as big data.

HYGERA Carebot enables more than 90% reduction in caregiving tasks related to waste management by automatically detecting excretion and suctioning urine. This product is not only anticipated to be indispensable in elderly and disability care but also in medical facilities. Additionally,

HYGERA Networks Inc. is set to launch wearable smart incontinence pants, aimed at active adults worldwide suffering from incontinence, providing self-managed preventive care and maintenance.

These urination monitoring devices, integrated with a urinary pattern management platform, offer personalized services and effective medical management, ushering in a new era of hygiene solutions. HYGERA Networks Inc. is dedicated to enhancing quality of life and medical care through its advanced technologies.

HYGERA Networks Inc., a South Korean social

venture, has been at the forefront of smart diaper technology since 2022, enhancing caregiving through its innovative products. Based in Seocho-gu, Seoul, HYGERA Networks Inc. specializes in real-time urination pattern analysis, providing valuable data visualizations and AI-driven insights that reduce the workload in caregiving settings.

- **HYGERA Networks Inc.**

#603, 36, Yangjae-daero 11-gil, Seocho-gu, Seoul, Republic of Korea

Tel: (82-2)579-0910

E-mail: sales@hygera.kr

Website: www.hygera.kr



Medical Devices

Bedsore Prevention Robot

[INQ. NO. 2505C27] Nine Bed is an innovative medical device developed by Ninebell Healthcare to effectively prevent bedsores in patients. Unlike conventional products that use air cells, this robot contains pressure sensors embedded in keyboard-like components that measure patient body pressure data. The artificial intelligence system automatically determines whether pressure exceeds the critical bedsore threshold (4.27 kPa) and operates individual keys to create level differences, thereby preventing bedsores.

The bedsore prevention robot has received medical device certification from Korea's Ministry of Food and Drug Safety. The product features several key functions including pressure distribution, alternating flotation (time-controlled), patient position movement (left and right), fall prevention alerts, massage capabilities, and adjustable backrest and leg plate angles and height settings. These functions help prevent bedsores while reducing the physical fatigue of caregivers.

Any Bed is a complementary product designed for installation on existing beds in hospitals, nursing homes, and home environments. This system applies the angle adjustment functions for backrest and leg plates to an alternating flotation mattress, enhancing patient comfort. It incorporates the same bedsore prevention technology as Nine Bed, specializing in protecting patients from pressure ulcers while working with standard bed frames.



Ninebell Healthcare Co., Ltd. is dedicated to improving the quality of life for patients suffering from diseases. In response to increasing demands for products that ensure quality, safety, disease prevention, and patient health improvement in the rapidly changing medical device market, the company has developed this new concept of bedsore prevention robot by integrating artificial intelligence, IoT, big data, and robot control technologies.

The company contributes to improving care service quality in both medical institutions and home environments by effectively preventing patient bedsores and reducing caregiver burden. Ninebell continues to develop various product forms based on its robot control technology, providing practical solutions to more patients and caregivers.

- **Ninebell Healthcare Co., Ltd.**

#B201~202, A-dong, 99, Sagimakgol-ro, Jungwon-gu, Seongnam-si, Gyeonggi-do, Republic of Korea

Tel: (82-31)776-2361, (82)1599-0109

E-mail: sales@nbhc.co.kr

Website: <https://www.nbhc.co.kr>

Health Care Products

Nasal Rhinitis Treatment Device

[INQ. NO. 2505C28] Hanmi Bionet is a Class 2 medical device certified by the Korean FDA. This innovative device helps treat rhinitis using 660nm wavelength low-power red light that illuminates the nasal cavity, suppressing reactive oxygen species in the blood and alleviating allergic rhinitis symptoms. Weighing just 18g with a mini-size design, it's simple enough for children to use independently and includes a case for hygienic storage.



Bluetooth Blood Pressure Monitor

Mobiro S blood pressure monitor features an oversized cuff (22-42cm) to accommodate larger arms. This Bluetooth-enabled device allows users to manage readings through an application and can also be used with a USB-C connection. Its backlit LCD display enables use in low-light conditions, while the all-white design presents a simple yet premium appearance.

Mesh Neoprene Protectors

Himedi Mesh Neoprene supports come in three varieties: thumb-loop wrist support, double-compression wrist support, and knee patella support. These products feature half the thickness of standard neoprene with added perforation to prevent sweating. All three designs incorporate double compression and premium Velcro that reduces pilling with repeated use. Their lightweight, thin construction makes them ideal for everyday use.



Waist and Pelvic Support Belt

Himedi Mini Power Belt is a domestically produced support belt with a width of only 10cm. Made from breathable air-mesh fabric with excellent elasticity, it features two support frames that secure the lumbar region, with primary and secondary Velcro closures enhancing support capabilities. Manufactured in a GMP-certified factory, this product provides targeted support without the bulkiness of conventional back braces.

Heel Exfoliation Socks

Himedi Heel Pad is a 100% domestically produced foot care product made from soft, thin material. When worn, specially designed silicone gently envelops rough heels, preventing moisture evaporation and providing hydration that helps reduce calluses. The open-toe design prevents discomfort while the customized heel contour ensures the product stays in place during movement.



• Eonemedical Corp.

#3143, 1F, 35, Gyeonggyojang-gil, Jongno-gu, Seoul, Republic of Korea

Tel: (82-2)3673-2121

E-mail: webmaster@eonemedical.com

Website: www.eonemedical.com, www.himedi.net

Medical Devices

Interactive Rehabilitation Table

[INQ. NO. 2505C29] Neofect Smart Table is an innovative multi-touch interactive table designed to improve cognitive function and upper limb motor skills in the elderly. Unlike simple game-based products, this advanced system focuses on task-oriented training content that provides structured rehabilitation exercises with clear therapeutic objectives. Users can engage simultaneously in collaborative activities using various tools, enhancing both concentration and social interaction capabilities.

The Smart Table features height adjustment and screen tilting functions, making it accessible to diverse users including wheelchair users and children of different ages and body types. Recently, the company has expanded its functionality by developing kiosk-based game content specifically for older adults unfamiliar with digital devices. This addition enhances the product's utility for digital literacy education and dementia prevention training programs.



The device is ideally suited for nursing hospitals, day care centers, public health centers, and welfare facilities that focus on elderly care. It serves as an optimal solution for institutions emphasizing cognitive rehabilitation through group activities. Rather than being merely gaming equipment, Smart Table functions as a digital healthcare solution with clear training objectives, simultaneously promoting cognitive stimulation and social participation.

Neofect Co., Ltd. specializes in innovative medical solutions that assist in the rehabilitation of patients with neurological and musculoskeletal damage, including stroke and dementia. The company's smart rehabilitation solutions combine AI-based rehabilitation devices with specialized content to provide customized training for patients. Their game-based rehabilitation approach offers engagement and motivation unavailable in conventional rehabilitation equipment, accelerating recovery through the crucial element of repetitive practice.

Neofect products are utilized in over 200 hospital occupational therapy departments across Korea. The company has also established subsidiaries in the United States and Germany, targeting the European and American markets that represent over 70% of the global healthcare market, where their products have received positive evaluations and increased brand recognition.

• Neofect Co., Ltd.

#801, 42, Changeop-ro, Sujeong-gu, Seongnam-si, Gyeonggi-do, Republic of Korea

Tel: (82-31)889-8521

E-mail: Contact.kr@neofect.com

Website: www.neofect.com

Health Care Products

Air Sterilizer

[INQ. NO. 2505C30] VI-CAPTURE Air Sterilizer is an innovative air purification device designed to capture and sterilize airborne bacteria and viruses, including respiratory droplets that contribute to the spread of infectious diseases. Unlike traditional HEPA filters that cannot remove viruses smaller than 0.3 μm , this advanced system employs a unique cylindrical filter structure that effectively captures pathogens of all sizes while simultaneously eliminating ultrafine dust particles.

The device features a revolutionary design where droplets containing bacteria and viruses are ionized and passed through a high-density linear electric field for capture and sterilization. This approach allows for comprehensive air management that proactively controls various infectious diseases through enhanced sterilization capabilities. The product was selected as an innovative product by the Public Procurement Service in 2024.

The cylindrical filter structure runs parallel to airflow, resulting in reduced noise levels and increased virus capture speed. A special adhesive filter securely holds captured viruses for sterilization, enhancing overall effectiveness.

This specialized filter can be used for over three years, significantly reducing maintenance costs compared to conventional air purifiers that require frequent filter replacements.

Independent testing confirms the device's exceptional performance, with a 99.0% reduction rate of airborne viruses and a 99.9999% antiviral evaluation rating.

The VI-CAPTURE Air Sterilizer comes with a mobile stand that allows users to easily move the unit between different spaces, maximizing its utility and protection coverage throughout various environments.

FHIKOREA.Co.,Ltd, established in 2007, is dedicated to improving quality of life through health-oriented products. The company has expanded

its business through collaborations with major corporations like Hyundai Motor Company, developing thermoelectric heating and cooling systems, and LG Household & Health Care. In addition to the VI-CAPTURE, the company has developed the HEXRAY UV sterilizer supplied to negative pressure rooms at the National Medical Center and various hospitals.

• FHIKOREA.Co., Ltd.

6F, 53, Gangnam-daero 99-gil, Seocho-gu, Seoul, Republic of Korea

Tel: (82-2)703-7710

E-mail: order@fhikorea.com

Website: <http://fhikorea.com>



Digital Healthcare

Telemedicine Kiosk Platform

[INQ. NO. 2505C31] SAERO Dr. is an innovative ICT-based telemedicine kiosk platform developed by SAERO MS Co., Ltd. This advanced solution enables patients in medically underserved areas to receive quality healthcare without physically visiting hospitals. The system particularly benefits elderly care facilities, rural communities, and remote towns where access to medical services is limited.

The platform features real-time remote video consultation with licensed physicians through a simple and user-friendly interface. Its intuitive UI/UX design incorporates voice guidance to accommodate users of all age groups, making it particularly accessible for elderly patients who may be less familiar with digital technology. The 23.8-inch large display creates an immersive consultation experience, helping patients feel more connected to their healthcare providers despite the physical distance.

SAERO Dr. streamlines the entire medical process by enabling prescription transmission directly to the patient's preferred

pharmacy following consultation. The system effectively removes geographical barriers to healthcare access while maintaining the quality of medical services.

Currently, SAERO MS is establishing strategic partnerships with local governments and welfare institutions throughout Korea to expand the reach of their telemedicine solution. These collaborations are crucial for addressing healthcare disparities in underserved communities and improving overall public health outcomes. The company has already deployed multiple units across various regions, demonstrating the platform's effectiveness in real-world healthcare settings.

SAERO MS Co., Ltd. is positioning itself for global expansion with export-ready models of the SAERO Dr. platform. The company recognizes the worldwide trends of aging populations, digital healthcare transformation, and increasing demand for telehealth services, particularly among overseas Korean communities. This international growth strategy aligns with global health initiatives that emphasize accessible care and technological innovation in healthcare delivery systems.

- **SAERO MS Co., Ltd.**

2, Baumoe-ro 27-gil, Seocho-gu, Seoul, Republic of Korea

Tel: (82-2)526-3299

E-mail: saerodoctor@ildong.com

Website: <https://www.saeroms.com>





*Healthier Life,
Happier Life!*

Reha 2025 Korea Rehabilitation· Homecare·Welfare Expo Homecare

홈케어·재활·복지 전시회

2025.5.29^{Thu} ~ 31^{Sat}

COEX Hall.B

Organizer





Producer of Yeoju & Moringa Products

We are striving to transition to a company producing high value added products, not a mere food manufacturer, and increase rural income through convergence between the farming industry and high tech industry.



To this end, we have discovered functional materials that utilize agriculture and life resources. We use raw functional health materials with high industrial values, including bitter melon and Moringa. As such, we are a producer of processed agricultural functional health foods with guaranteed pharmacological effects and stability that can contribute to the promotion of national health.

The manufacturing methods of our products, from the initial production stage to the packaging stage, are clearly differentiated from others. Our products are 100 % domestically produced products with excellent health healing and pharmacological effects. Our company has realized continuous growth because our products (in all stages from the self production of agricultural products to the processing to the distribution) have been fully proven by consumers.

CW&B Farm

4829-33, Hoguk ro, Galmal eup, Cheorwon-gun, Gangwon-do, Republic of Korea INQ No. D1022
Tel. +82-10-3768-8311 Fax. +82-70-7796-3156 www.cwbm.kr E-mail: ymk1156@hanmail.net

Health Functional Foods

Liquid Tea

[INQ. NO. 2505C32] GCW&B Farm offers Liquid Tea (Bitter Melon Extract), a premium product made from 100% domestically grown bitter melon. This unique tea retains the natural color of the melon and contains no sediments, ensuring a smooth and clear beverage. It offers a distinct and clean bitter flavor, providing a lingering taste that sets it apart as the only product of its kind in the domestic market.



Processed Products

The Other Processed Products from CW&B Farm include powders and pills made from 100% domestic bitter melon and moringa leaves. These products are free from additives and metallic impurities, ensuring safe and optimal consumption. They are portable and convenient, offering excellent preservation and storage capabilities. The ultra-fine powder form and unique packaging make these products stand out in the market, promising high quality and user-friendly features.



Cereal

CW&B Farm's Cereal Products are made from 100% domestic ingredients, including rice combined with bitter melon and moringa. These products highlight their functional benefits and unique appeal, catering to consumers' expectations of pharmacological effects. The combination of traditional ingredients with functional enhancements provides a distinctive charm, making them a popular choice among health-conscious consumers.



CW&B Farm Co., Ltd. specializes in leveraging agricultural bio-resources to create high-value health



functional foods. By moving beyond traditional agriculture, the company focuses on rural convergence industrialization, aiming to increase rural incomes and contribute to public health. The company emphasizes the development of functional

materials, such as bitter melon and moringa, ensuring their safety and pharmacological efficacy to benefit consumers.

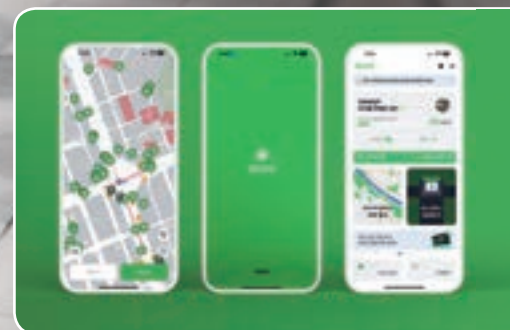
• **CW&B Farm Co., Ltd.**

4829-33, Hoguk-ro, Galmal-eup, Cheorwon-gun, Gangwon-do, Republic of Korea
 Tel: (82-10)3768-8311
 E-mail: gy3053@naver.com
 Website: cwbm.kr

Mobility Evolution for All by **GBIKE**

Beyond limits New Mobilty Freedom

GBIKE offers safe, reliabile short-range transit,
surpassing limits of walking for a freer, more convenient life.



Unveiling the Traditional Charm of the Korean Folk Village

Nestled in the scenic landscape of Yongin-si, Gyeonggi-do, the Korean Folk Village stands as a vibrant testament to South Korea's rich cultural heritage. Since opening its doors in October 1974, this expansive 245-acre living museum has transported millions of visitors back to the late Joseon Dynasty (1392-1897), offering an immersive glimpse into traditional Korean life.



A Living Museum of History and Craft

The heart of the Korean Folk Village lies in its meticulous recreation of traditional Korean architecture. The village features 270 authentic houses that were carefully relocated and reconstructed from various regions across Korea. As you wander through the village pathways, you'll encounter common dwellings, aristocratic residences, provincial government offices (gwana), educational institutions (seowon), Buddhist temples, and even a fortune-teller's abode—each telling its own story of Joseon-era life.

One of the most enchanting aspects of the village is witnessing traditional Korean craftsmanship in action. Nine specialized ateliers showcase skilled artisans practicing time-honored crafts including blacksmithing, earthenware making, bamboo weaving, and woodworking. Visitors can observe the creation of bamboo ware, wooden utensils, brass tableware, wooden masks, and naturally dyed fabrics, with many items available for purchase as unique souvenirs.



The village truly comes alive through its schedule of dynamic traditional performances. The non-verbal Pungmul Performance combines Korean music and dance in a way that transcends language barriers, while the Eolssigu Jeolssigu parade brings together traditional dances and comic elements from the classic Tale of Chunhyang. Other performances include equestrian displays and traditional wedding ceremonies, each offering a window into historic Korean life.

Cultural Experiences and Seasonal Festivities

The Marketplace recreates the authentic atmosphere of a Joseon-era market, serving around 20 local and seasonal dishes prepared using traditional methods. Visitors can indulge in classic Korean fare such as naengmyeon (cold noodles), bibimbap (mixed rice bowl), and handmade dumpling soup. Korea House serves upscale Korean dishes popular among international tourists, while Gilmokjip offers specialties like bulgogi in a traditional setting. Traditional teahouses serve herbal teas alongside seasonal treats like sweet red-bean porridge in winter.

The Korean Folk Village transforms throughout the year with distinct seasonal experiences. The “Adding the Moonlight” evening festival bathes traditional houses in gentle illumination and features captivating LED performances. The “Horror Village in the Dead of Night” offers ghostly encounters inspired by Joseon-era folklore. Spring brings the “Welcome to Joseon” festival with costumed historical characters, while winter features the King’s Christmas festival and opportunities to try traditional Korean snow sledding.

The village also celebrates traditional Korean holidays with special events—fortune rice cake on Korean New Year, moon house burning during Jeongwol Daeboreum (First Full Moon), and traditional games during Chuseok (Korean Thanksgiving).



Visitor Information and Regional Attractions



The Korean Folk Village is located at #90 Minsokchon-ro, Giheung-gu, Yongin-si, Gyeonggi-do. Operating hours vary by season, generally running from 9:30 AM until early evening, with extended hours on weekends. Admission fees range from 8,000 to 15,000 KRW, with “Free Pass” options available at higher rates.

Transportation options from Seoul include bus routes No. 5001-1 from Sinnonhyeon Station and No. 4101 from Sungnyemun Gate. Subway travelers can take the Suin-Bundang Line to Sanggal Station and connect to local buses. Visitor feedback consistently highlights the importance of wearing comfortable footwear and recommends renting a hanbok (traditional Korean clothing) to enhance the immersive experience.

The strategic location makes the Korean Folk Village an excellent

anchor for exploring other regional attractions. Nearby lies Everland, South Korea’s largest amusement park, and the UNESCO World Heritage Suwon Hwaseong Fortress. Other attractions include the Gyeonggi Children’s Museum, Nam June Paik Art Center, and Hwadam Botanic Garden.

The Korean Folk Village represents a vital bridge connecting contemporary visitors with Korea’s rich cultural heritage. Through its authentic architecture, living traditions, vibrant performances, and seasonal celebrations, the village offers an unparalleled opportunity to experience the essence of traditional Korean life that resonates with visitors of all backgrounds—making it a must-visit destination for anyone seeking to understand the soul of Korea’s cultural past.



Clean air, water, and salt cleanse our bodies thoroughly.



Among them, salt has the greatest natural healing power.

SUNMAC, Inc.

INV No. D1031

94, Gwangseokhyanghan-gil, Umsa-myeon, Gyeryong-si, Chungcheongnam-do, Republic of Korea
Tel. +82-10-9053-1502 / +82-41-857-1817 www.bitsogum.co.kr E-mail: sunmac.s1986@gmail.com

ADVERTISERS' INDEX

Inq No.	Company	Tel	Url	E-mail	Page
Consumer Goods					
C209	Hega Corporation	(82-41)956-8700	www.hegacorp.com	master@hegacorp.com	8
D1026	GBIKE / GCOO	(82)1833-5748	https://gcoo.io	help@gbike.io	55
N627	SAMYANG FINE CHEMICAL	(82-55)370-6881	www.syfc.co.kr	syfc@syfc.co.kr	17
D1051	KWANGSAN	(82-70)8829-2427	https://smartstore.naver.com/neozzang	bosodad@nate.com	Cover 4 Cover 2, 1, 3, 4
D1046	SKINMANSION CO., LTD.	(82-70)7456-1700	www.vita-on.com	skinmansion@naver.com	4~5
D1033	IFTech Co., Ltd. (Innovation + Film Technology)	(82-41)906-5000	www.iftech.kr	andy@iftech.k	Cover 3, 60
D1021	ventusacaqua	(82-10)3730-3760	www.ventusacaqua.com	info@ventusacaqua.com	24, 25
D1022	CW&B Farm	(82-10)3768-8311	www.cwbn.kr	ymk1156@hanmail.net	53
D1017	OKDUFOOD CO., LTD.	(82-33)344-9272	www.okdufood.com	okdu-food@naver.com	15
D1031	SUNMAC, Inc.	(82-41)857-1817	www.bitsogum.co.kr	sunmac.s1986@gmail.com	58
D1036	GLG&B Co., Ltd.	(82-70)7756-0509	www.glgnb.com	glgnbco@gmail.com	11
D1050	SINSIN PHARM	(82-31)491-6151	www.sinsin.com	wjhan@sinsin.com	16
Other					
	K-HALAL FESTA		www.halalkorea.center		12, 13

SUHOJA Standalone Monitor Security Eye Protection Privacy Protection Film

Are you worried that people behind you might see you in the cafe at work?

You don't have to worry anymore. Solve it with SUHOJA's privacy protection stand. It blocks blue light and protects your eyesight. Now work comfortably with privacy protection.



The top hinge is 90 degrees so it can be attached seamlessly to the monitor.



The bottom has a magnet so it can be used firmly.